

Tejas Vettes Corvette Club



Tejas Vettes Corvette club invites you to our NCCC event for 2015. Come join us for 7 low speed autocrosses at the Prairie Hill Dragway on October 31st. As always, we will do our best to maintain a fast, cone limited, & challenging autocross course.

You will be able to leave your rig at the track on Friday night if you get there before 6pm at which time the gate will be locked. Tech will be at the hotel on Friday.

Lunch will be provided on Saturday as part of the complete weekend registration package. Lunch vouchers will be handed out during registration. Hang on to them or you'll go hungry! Non-drivers or guests can purchase lunch for \$7. Seating is limited so you should bring your chairs.

Saturday we will complete the autocrosses as efficiently as possible so that there is plenty of time for relaxation and celebration. The driver's meeting will start at 8:00 AM. The first car on the track following the driver's meeting. A regional Governor's meeting is scheduled at the host hotel Saturday evening at 7:00 PM.

To keep costs to a minimum, there will be no awards, shirts, or trophies. Our goal is to provide you with thrills, not frills.

HOST HOTEL:

Best Western Czech Inn
114 Melodie Dr. West, Tx. 76691
254-826-0900



Your GPS may not find the location of the track so follow the map and directions attached to this flyer.

***"Non-NCCC member participants and workers
are not covered by NCCC Insurance"***

NATIONAL COUNCIL OF CORVETTE CLUBS, INC.

Tejas Vettes Corvette Club

Sanction # SW-163-001 thru 07

Type of Event: LS Autocross #1,2,3,4,5,6,7

Date: October 31, 2015 Clubs: Tejas Vettes

Registration: Immediately Closes: FCO

Region: Southwest

Drivers Meeting Time: 8:00 AM

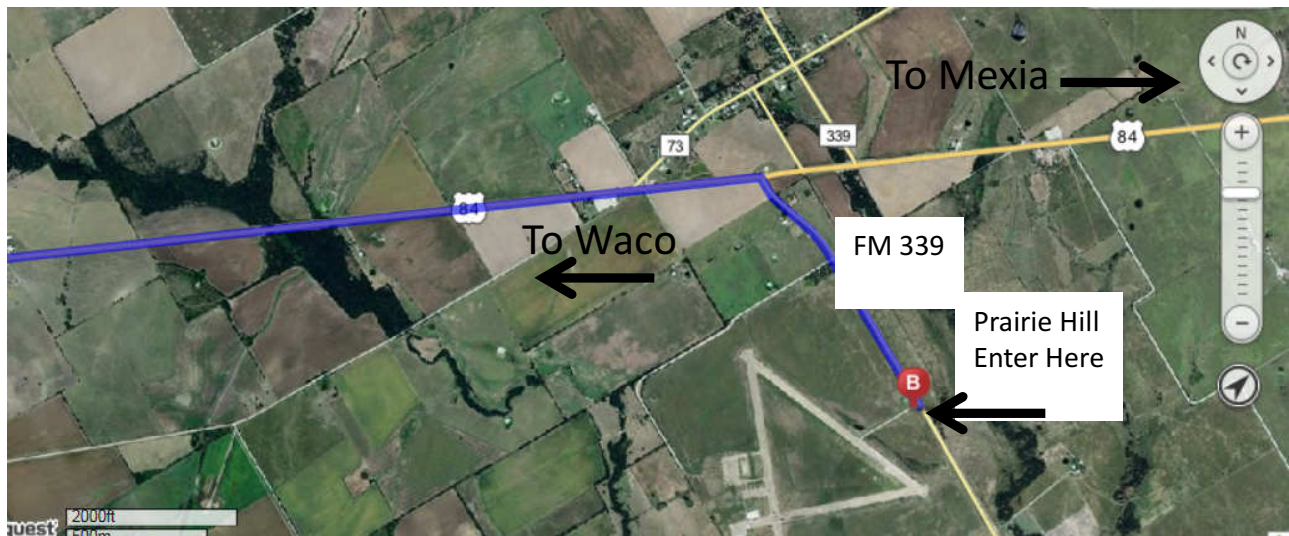
Entry Fee \$15 per event

First Car Out Time: 8:15 AM

Location Description: **Prairie Hill DW
Mart, Texas**

Exhaust: Open Closed XX

Speed Events: Hi Low XX



<http://prairiehilldragway.com/>

From S 135: Take exit 339 (Loop 340) Rt on 340 To Hwy 84/31 (.7 Mi)

Left on 84 (18.2 mi)

Rt on 339 (.9 mi) Track entrance is on the right.

From West, (This would be a good way to the track if coming from the host hotel on I-35.

Take HWY 2114 Exit,

Take SH 2114 east through West. Changes to SH 2311 in .8 mi.

Go 12.2 mi on 2311 then left on SH 31 (2.8 mi)

Turn right on FM 939 (5.4 mi), then left on Hwy 84 (6 mi), the right on FM 339. Track entrance is on the right .9 mi FM339

Event Chairman: (1) Dean Lackey, (2) Cheryl Surdick, (3) JR McLaughlin, (4) Alan Malom, (5) Neil Fox, (6) Eleen Fox, (7) Geroge Stracke

Governor: Ken Sutton

Note: In a high-speed event, all roadsters must have roll bars as outlined under Section on Technical Inspection for Speed Event. It is highly recommended that all competing cars be equipped with rollbars at high-speed events. Fire extinguisher (min. 5BC) required in all groups and classes at high-speed events.

